



9 Jesse Hartley Way, Liverpool

£725 Per Month

AVAILABLE 26TH NOVEMBER

Welcome to Central Quay, a stunning development of modern apartments. Situated in Liverpool's vibrant city centre is this fabulous one bedroom apartment that's available now!

Superbly located on the Waterloo Dock, Central Quay boasts amazing waterfront views and perfect positioning for an array of local amenities. Close to Moorfields Train Station, and only 20 minutes by foot from Liverpool ONE, you'll find all the very best of the city right at your doorstep.

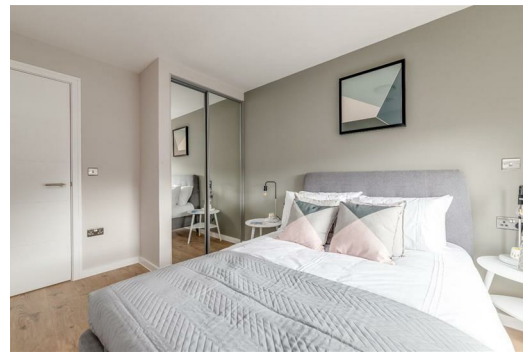
The bedroom, double in size, offers plenty of floor space and excellent furnishings.

You'll have a vast choice of bars, restaurants and coffee shops close by in the Waterloo Dock area, and you're just a few moments away from the very best of the city action!

Just so you know, these images are for marketing purposes only.



716, Quay Central 9 Jesse Hartley Way, Liverpool, Merseyside, L3 0AD



Energy Efficiency Rating		Environmental Impact (CO ₂) Rating	
Current	Potential	Current	Potential
76	76	B	B
		C	C
		D	D
		E	E
		F	F
		G	G